



**KALINGA INSTITUTE OF INDUSTRIAL TECHNOLOGY**  
Deemed to be University U/S 3 of the UGC Act, 1956  
**SCHOOL OF LEADERSHIP**



**KIIT**  
**Technology Business Incubator**

# **MBA in** **Innovation, Entrepreneurship, and** **Venture Development (IEV)**

**Powered by**  
**KIIT Technology Business Incubator**

# Journey of KIIT

Kalinga Institute of Industrial Technology (KIIT) is a hallmark of quality education and one of the most sought-after destinations in India for professional studies. It is admired for the high quality of its academic courses, its community outreach work and as a university of innovation, compassion and humanitarianism. The university offers professional education to students from across India and abroad, with over 30,000 students pursuing undergraduate, postgraduate, and PhD courses in the University, and 10,000 enrolled across its other programmes. This includes 2000 international students from 65 countries. The alumni of KIIT, over a lakh of them, have made their mark in their respective careers in academics, corporate organisations, civil services and enterprise.

KIIT has made colossal contributions to sports, having produced 23 Olympians. The University has been honoured with the CII Sportstar Award, FICCI India Sports Award, and Rashtriya Khel Protsahan Puruskar 2022 for its outstanding promotion of sports and encouragement through Corporate Social Responsibility. Additionally, KIIT and KISS serve as the nodal centres for the FIFA Football for Schools Programme in Asia. Beyond its immense contributions to the development of the state and the city, KIIT has also promoted local art, culture, sculpture, rural development, literature, and spiritualism.

The campus houses a 2600-bedded super speciality hospital, KIMS, a multi-storey central library, a central research facility, a 22-storey research and innovation wing, auditoriums – the largest one with 5000 seating capacity, 18 sports complexes, many international standard stadiums covering all sports, 30 food courts, and a rose garden. The institution takes pride in being the greenest campus in India.



**257**  
**World**  
**University**  
**Ranking: Asia**



**501-600**  
**For the year**  
**2026**



**No1**  
**For the year**  
**2026**



**17th**  
**Among all**  
**Govt. & Pvt.**  
**Universities**



**FICCI**  
**Higher**  
**Excellence**  
**Education**  
**Award**



**KIIT**





## About KISS

**Kalinga Institute of Social Sciences (KISS) Deemed to be University** is the largest tribal university in the world, providing free education, accommodation, food and healthcare at our international-standard campus in Bhubaneswar. The foundations of KISS are based on Prof. (Dr.) Achyuta Samanta's dream of transforming lives through holistic education for indigenous students across the country.

The institute, which started with only 125 tribal students in a rented house in 1992-93, has spiralled into the world's largest and only institute providing free education from Kindergarten to Post-Graduation and Doctoral Programmes with vocational and extracurricular training, free lodging and boarding, state-of-the-art facilities and indigenously controlled pedagogies exclusively to more than 80,000 indigenous students. The university also serves an additional 10,000 students across its satellite centres.

As champions of change, students of KISS have made a mark for themselves not only in academics but also in sports and vocational activities alike. Such a feat has earned the university recognition on the global stage. Since 2015, it has been accorded Special Consultative Status with the Economic and Social Council (ECOSOC) and is associated with the United Nations Department of Public Information

**2007**

KISS boys Rugby Team  
representing India became  
U13 World Champion

**2023**

Received International Green  
Gown Award for Diversity, Equity,  
and Inclusion in Sustainability

**2022**

Conferment of UNESCO  
King Sejong Literacy Prize





# Founder's Message

**Prof. (Dr.) Achyuta Samanta**

Founder ( KIIT, KISS & KIMS )

It is with great pride and immense pleasure that I welcome you to the School of Leadership at KIIT Deemed to be University. As the founder of this institution, I have always believed that education is not merely about the accumulation of knowledge, but the development of character, vision, and the ability to inspire and lead in an ever-changing world. Leadership, in its truest sense, is the ability to bring about positive transformation.

At KIIT, we have long been committed to empowering young minds with the tools to lead with integrity, innovation, and compassion. The School of Leadership represents the culmination of our vision to create a centre of excellence where students are nurtured into leaders capable of addressing the complex challenges of the future. In a rapidly evolving global landscape, where traditional ways of thinking and acting are constantly being challenged, true leadership demands more than just academic credentials. It requires creativity, critical thinking, empathy, and the ability to collaborate across cultures and disciplines.

That is why at KIIT, we offer more than just academic programs, rather a transformative experience that combines intellectual rigour with hands-on leadership development. We believe that leadership is a skill that is learned through action, reflection, and continual improvement. In our programs, students engage with global leaders, participate in cutting-edge research, collaborate with industry experts, and immerse themselves in the world beyond the classroom.

Moreover, we strongly believe in the development of the heart, mind and soul. The pursuit of excellence in leadership requires not only intellectual and professional growth but also emotional intelligence, self-awareness, and the ability to inspire others with humility and empathy. Over the years, KIIT has earned a reputation for producing leaders who excel in various fields, whether in business, government, academia, or social entrepreneurship. Our alumni, who are making remarkable contributions across the globe, are a testament to the power of education that goes beyond conventional teaching. They are living proof that when students are given the right opportunities, resources, and guidance, they can achieve remarkable things.

As you embark on your own journey at the School of Leadership, I encourage you to embrace the challenges that lie ahead with courage, resilience, and a commitment to excellence. Your time at KIIT will not only shape your career but also define the kind of leader you become—one who leads with vision, compassion, a deep sense of purpose, and, most importantly, to serve those who you will lead.

# Vice- Chancellor's Message

**Prof. (Dr.) Saranjit Singh**

Welcome to the School of Leadership at KIIT Deemed to be University! It is my pleasure to extend a warm invitation to all aspiring leaders, visionaries, and changemakers who are looking to make a lasting impact on the world.



At KIIT, we believe that leadership is not a position of power rather an opportunity to serve. The School of Leadership stands at the heart of our commitment to fostering the next generation of responsible, innovative, and empathetic leaders. Our mission is to equip learners with the knowledge, skills, and confidence to take on challenges, inspire change, and contribute meaningfully to society, both locally and globally. In today's rapidly changing world, the demands placed on leaders are more complex than ever. A successful leader must be not only knowledgeable but also agile, resilient, and socially conscious. At the School of Leadership, we strive to develop well-rounded individuals who can adapt to these complexities and excel in dynamic environments.

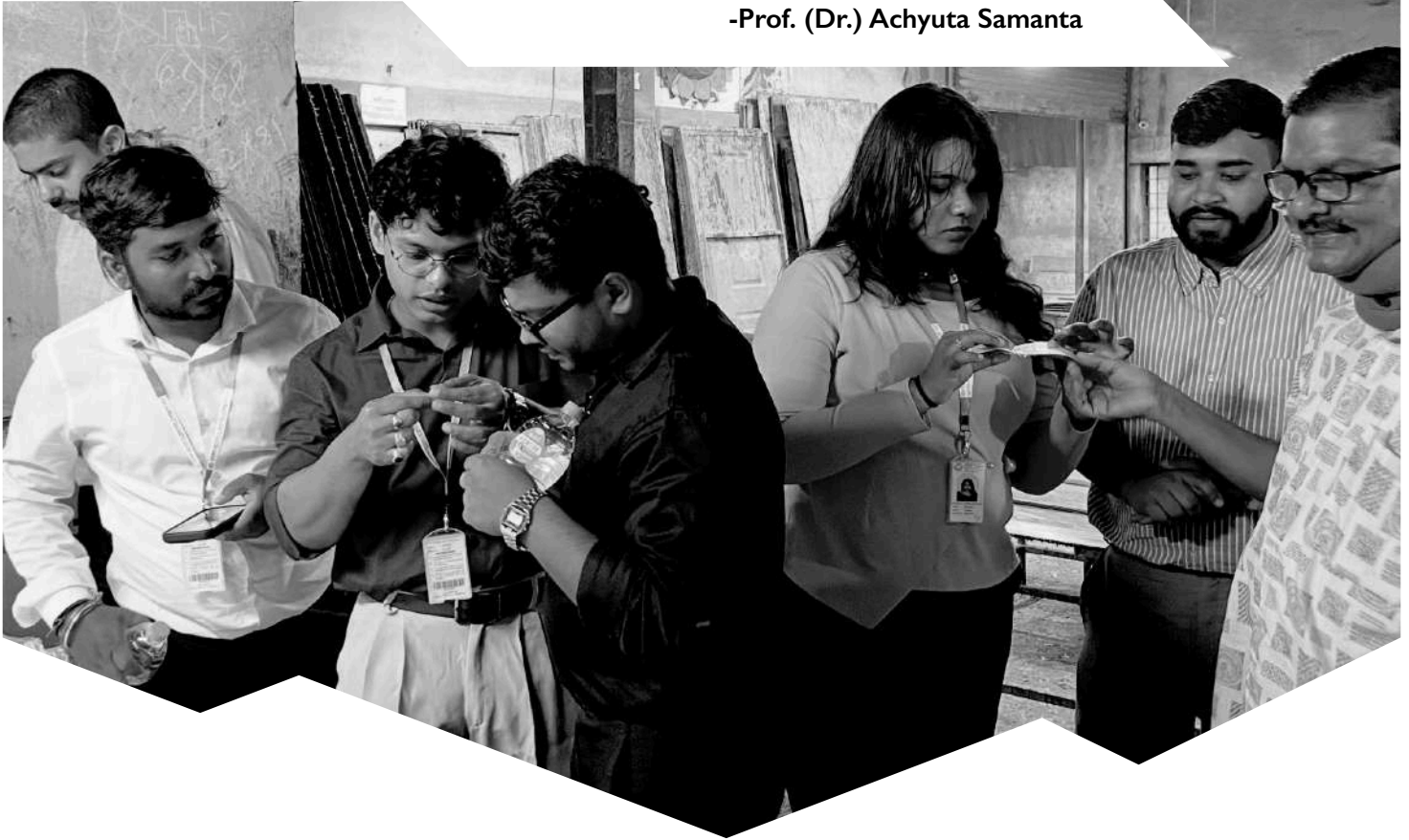
As a university that emphasises innovative learning, we are proud to offer a diverse range of programs from short-term certification programs to need-based training, Master of Business Administration in Innovation, Entrepreneurship and Venture Development (IEV), to doctoral research. Our academic framework is designed to foster critical thinking, problem-solving, and collaboration among students. In addition to academic excellence, we provide unique opportunities for learning at some of the world's most acclaimed universities for global exposure and experiences. These experiences are pivotal in helping our students gain the real-world insights they need to become effective leaders. Trained by world-class faculty at KIIT, leadership goes beyond the classroom. We actively encourage our students to participate in advanced-level case study competitions in the global forum. These platforms provide opportunities for self-expression, collaboration, and the development of leadership qualities such as teamwork, empathy, and resilience.

I am confident that your journey at the School of Leadership will be one of immense growth and discovery. Whether you aspire to become a successful entrepreneur, a corporate leader, a public servant, or a global change-maker, the skills and insights you gain here will serve as the foundation for your future success. As you step into the world of leadership, remember that at KIIT, we are not just shaping students; we are nurturing leaders who will lead with vision, compassion, and a commitment to making a positive difference in the world.

Welcome to the School of Leadership—where your journey to becoming a transformative leader begins.

# “To Lead is to Serve”

-Prof. (Dr.) Achyuta Samanta



## School of Leadership

The KIIT School of Leadership (KSLd) emphasises “Nurturing Future Leadership”. It focuses on cultivating essential leadership qualities, skills, and knowledge to empower individuals to drive positive change in various sectors by combining their energy and intellect to create future-ready leaders. Establishing the school is not only a step forward but also a vital necessity in today’s rapidly evolving world. As India strives towards the vision of “Viksit Bharat”, it is imperative that we cultivate leaders who are not only equipped with technical knowledge but also possess the leadership qualities, skills, and visionary mindset needed to drive positive change across sectors. The SLd at KIIT is designed to enable future leaders in transforming practitioners of today into business and societal leaders of tomorrow.

Our goal is to cultivate leaders who possess strong character, expertise, and a genuine passion for their work. KSLd believes that ordinary people, through their everyday activities, are capable of crafting extraordinary acts that result in positive social impact, promote ecological balance, foster comprehensive development, and strengthen international relations if they adopt an inspired approach. The school aims to equip learners with thought-provoking insights, enabling them to navigate the complexities of the business world while making choices that benefit both society and the environment. This holistic approach intends to instil in the next generation of thinkers and professionals a sense of responsibility to act ethically and sustainably, ultimately contributing to a more equitable and thriving global community. Ultimately, the school envisions a future where inspired leaders drive businesses that are not only profitable but also positively impact the world around them.



## **MBA IEV**

**Innovation Entrepreneurship and  
Venture Development**

## **SRI**

**Centre for Social Research &  
Innovation**

## **KITES**

**Summer & Winter  
School**

## **PACE**

**Professional &  
Continuing Education**

## **CRC**

**Case Research Centre**

# **Vision**

To inspire and cultivate visionary leaders who are equipped to drive positive change, foster innovation, and shape a sustainable future through ethical, inclusive, and transformative leadership practices.

## **KSLd Aims to**

- Foster a culture of inquiry, innovation and entrepreneurial impact in alignment with India's vision for 'Viksit Bharat'.
- Develop essential leadership qualities, skills, and knowledge in individuals to empower them to drive positive change across various sectors.
- Prepare leaders who are adept at leading with the Indian ethos in their thought and action.
- Build the capabilities of senior executives in transformational leadership to create a vision statement and navigate change.
- Undertake cutting-edge research, strategic consulting, and collaborative partnerships to advance leadership knowledge and practice.
- Build the capabilities of the grassroots youth leaders on the knowledge, skills, and character necessary to lead local communities with purpose, passion, and integrity.
- Foster a community of leaders who collaborate, adapt, and thrive in a rapidly changing world, making a positive impact on society and the environment.
- Dissipate the need for SDG-sensitive decision-making with global prosperity in mind among future leaders.





# Centre for Social Research & Innovation (SRI)



**Dr. Debasish Mohapatra**  
Co-ordinator

At SRI, our purpose is deeply rooted in the belief that sustainable social transformation begins with empowered communities. Guided by our vision of fostering equity, inclusion, and opportunity, we strive to bridge the gap between knowledge and action through research-driven innovation and entrepreneurial thinking.

Our mission is to identify and nurture local innovations, integrate affordable technologies, and co-create livelihood solutions that are responsive to the aspirations of rural and marginalized communities. Through participatory research, capacity-building programs, and multi-sectoral collaborations, we aim to create pathways for youth empowerment and community-led development.

The Centre envisions itself as a catalyst connecting academia, industry, and civil society to generate impactful change. By fostering a culture of experimentation and social entrepreneurship, we aspire to transform challenges into opportunities and ideas into sustainable

## Thematic Areas



AGRICULTURE



ORGANIC VALUE CHAIN



WATER CONSERVATION  
AND IRRIGATION  
MANAGEMENT



LIVESTOCK  
DEVELOPMENT AND  
FISHERIES



COMMUNITY  
INSTITUTIONS



CRAFTSMANSHIP



SOCIAL INCLUSION



FINANCIAL INCLUSION



GENDER EQUALITY



BIODIVERSITY  
CONSERVATION



HEALTH AND NUTRITION



EDUCATION





# Case Research Centre

The Center is a pivotal initiative in our commitment to excellence in multi – disciplinary education and research. It serves as a cornerstone for fostering intellectual inquiry, industry collaboration, and student engagement through the development and dissemination of high-quality case studies. It is our belief that these cases will not only enrich our curriculum but also contribute significantly to academic scholarship and industry practice. It also bears witness to our commitment to enhance scholarly inquiry, enrich educational experiences, and foster impactful collaborations between academia and industry.

The centre has produced several case studies on intricate dilemmas faced by leaders of global companies which have been published by prestigious publication repositories including Ivey Case Publication, Harvard Business Cases, Emerald Emerging Market Case Studies, The Case Journal and more.

## PACE

Professional and Continuing Education (PACE) Programs are designed to equip aspiring and established leaders with the skills and mindset needed to navigate today's complex, fast-changing world. Whether you're an emerging talent, an experienced professional, or someone looking to shift into a leadership role, our programs offer practical, impactful learning experiences tailored to different leadership pathways. Each certification provides you with the tools to unlock your full leadership potential and make a meaningful difference in your organisation or community. Details available at [www.sld.kiit.ac.in](http://www.sld.kiit.ac.in)

## KITES

KITES is a unique and transformative program through its distinct value propositions that cater to diverse student needs. With a comprehensive learning model, the program seamlessly integrates theoretical insights delivered by professors with hands-on practical experiences led by successful entrepreneurs, ensuring participants gain a holistic understanding of entrepreneurship and leadership.

# MBA in Innovation, Entrepreneurship and Venture Development



The AICTE-approved MBA in Innovation, Entrepreneurship, and Venture Development is designed for ambitious startup founders and venture creators eager to lead and innovate in the dynamic business world. This program provides a unique blend of theoretical knowledge and practical experience, focusing on developing innovative business models, entrepreneurial strategies, and venture creation. Students gain the tools and insights to drive successful startups, manage emerging enterprises, and foster sustainable growth in today's rapidly evolving market. The program combines foundational business principles with specialised courses in innovation management, entrepreneurial strategy, venture capital, and startup operations. They also engage with cutting-edge topics such as digital transformation, disruptive technologies, and scaling strategies. Emphasising experiential learning, the program includes opportunities for real-world application through case studies, business simulations, and live projects. The program nudges students to work on actual startup challenges and collaborate with industry professionals to solve pressing business problems.

The curriculum cultivates an entrepreneurial mindset, encouraging students to think creatively, take calculated risks, and embrace uncertainty. Courses on design thinking, agile methodologies, and lean startup principles are integral to the learning experience. Students develop leadership skills for guiding innovative teams and scaling new ventures. The program includes strategic decision-making, organisational behaviour, and change management training to prepare students for leadership roles. The program offers extensive networking opportunities with successful entrepreneurs, investors, and industry experts. Mentorship programs and guest lectures provide valuable insights and guidance from established professionals in the field. Students continually access incubators, accelerators, and funding resources to support their entrepreneurial ventures. The program also includes workshops on pitching, business development, and funding strategies to help students turn their ideas into viable businesses.

What's more, the program prepares students to operate in a globalised business environment by focusing on global innovation trends and international markets. International study trips and our partnerships with global institutions broaden students' perspectives and expand their opportunities.

# Program Highlights

- Unique curriculum designed for future founders
- Experiential learning with immersion courses to develop and validate business ideas.
- Specialised modules in emerging science, technology, and business domains.
- Mentorship from experienced entrepreneurs, business leaders, and investors.
- Access to a global network of innovation and entrepreneurship ecosystems.
- Access to incubation platforms, potential investors and funding sources.



## Curriculum Design

Academic Program

2-year full-time MBA - IEV program

The MBA in Innovation, Entrepreneurship, and Venture Development is designed for ambitious startup founders and venture creators eager to lead and innovate in the dynamic business world. This program provides a unique blend of theoretical knowledge and practical experience, focusing on developing innovative business models, entrepreneurial strategies, and venture creation. Through this program, students gain the tools and insights to drive successful startups, manage emerging enterprises, and foster sustainable growth in today's rapidly evolving market. The curriculum cultivates an entrepreneurial mindset, encouraging students to think creatively, take calculated risks, and embrace uncertainty.



# Syllabus for MBA IEV

| Semester I   |                        |             |  |   |   |              |           |
|--------------|------------------------|-------------|--|---|---|--------------|-----------|
| Sl. No       | Nature of Course       | Course Code | Course Title   | L | T | P            | C         |
| 1            | Core                   | MI61101     | Innovation Economics and Market Dynamics                               | 2 | 1 | 0            | 3         |
| 2            | Core                   | MI61103     | Startup Ecosystem  | 2 | 1 | 0            | 3         |
| 3            | Core                   | MI61105     | Innovation Readiness and Product Development                           | 2 | 1 | 0            | 3         |
| 4            | Elective               | MI61107     | Business Analytics   | 2 | 1 | 0            | 3         |
| 5            | Elective               | MI61109     | Enterprise Design and Leadership                                       | 2 | 1 | 0            | 3         |
| 6            | Interdisciplinary      | MI61111     | Creative Interpretation  | 1 | 1 | 0            | 2         |
| 7            | Interdisciplinary      | MI61113     | Talent Mapping and Management  | 1 | 1 | 0            | 2         |
| 8            | Skill Certification    | MI69101     | Business Communication   | 0 | 0 | 2            | 2         |
| 9            | Capstone Project - I   | MI67101     | Ideation to Proof-of-Concept   | 0 | 0 | 2            | 2         |
|              |                        |             |  |   |   | <b>Total</b> | <b>23</b> |
| Semester II  |                        |             |  |   |   |              |           |
| 10           | Core                   | MI61102     | Customer Insight and Market Fit  | 2 | 1 | 0            | 3         |
| 11           | Core                   | MI61104     | Business Model Innovation  | 2 | 1 | 0            | 3         |
| 12           | Core                   | MI61106     | Finance and Accounting for Startups                                    | 2 | 1 | 0            | 3         |
| 13           | Elective               | MI61108     | Startup Policy   | 2 | 1 | 0            | 3         |
| 14           | Elective               | MI61110     | Data-Driven Venture Strategy   | 2 | 1 | 0            | 3         |
| 15           | Interdisciplinary      | MI61112     | Crafting Consumer Value  | 1 | 1 | 0            | 2         |
| 16           | Interdisciplinary      | MI61114     | Entrepreneurial Storytelling   | 1 | 1 | 0            | 2         |
| 17           | Skill Certification    | MI69102     | Advanced Excel   | 0 | 0 | 2            | 2         |
| 18           | Capstone Project - II  | MI67102     | Development of Innovation/Prototype                                    | 0 | 0 | 2            | 2         |
| 19           | Action Learning - I    | MI67104     | Startup/Incubation/Acceleration Program/Residency Learning Program     | 0 | 0 | 6            | 6         |
|              |                        |             |  |   |   | <b>Total</b> | <b>29</b> |
| Semester III |                        |             |  |   |   |              |           |
| 20           | Core                   | MI61115     | Tech Commercialization Strategies                                      | 2 | 1 | 0            | 3         |
| 21           | Core                   | MI61117     | New Venture Planning and Compliances                                   | 2 | 1 | 0            | 3         |
| 22           | Core                   | MI60101     | Valuation and Finance for Startups                                     | 2 | 0 | 0            | 2         |
| 23           | Core                   | MI60103     | Innovation Ecosystem in India  | 2 | 0 | 0            | 2         |
| 24           | Elective               | MI61119     | Fundraising Strategies for Startups                                    | 2 | 1 | 0            | 3         |
| 25           | Elective               | MI61121     | Incubation Design and Management                                       | 2 | 1 | 0            | 3         |
| 26           | Elective               | MI61123     | Social Entrepreneurship  | 2 | 1 | 0            | 3         |
| 28           | Elective               | MI61125     | Strategic Management in Start-ups                                      | 2 | 1 | 0            | 3         |
| 29           | Elective               | MI60105     | Service-Based Business Management                                      | 2 | 0 | 0            | 2         |
| 30           | Interdisciplinary      | MI61127     | Personal Branding  | 1 | 1 | 0            | 2         |
| 31           | Interdisciplinary      | MI61129     | Learning from Failures   | 1 | 1 | 0            | 2         |
| 32           | Skill Certification    | MI69103     | Data Visualization   | 0 | 0 | 2            | 2         |
| 33           | Capstone Project - III | MI67103     | Development of Business Model  | 0 | 0 | 2            | 2         |
|              |                        |             |  |   |   | <b>Total</b> | <b>32</b> |
| Semester IV  |                        |             |  |   |   |              |           |
| 34           | Interdisciplinary      | MI61116     | India – A Deep Dive  | 1 | 1 | 0            | 2         |
| 35           | Interdisciplinary      | MI61118     | Business and Professional Ethics                                       | 1 | 1 | 0            | 2         |
| 36           | Skill Certification    | MI69106     | Business Simulations   | 0 | 0 | 2            | 2         |
| 37           | Action Learning - II   | MI67106     | Real-time establishment and management in incubation/acceleration unit | 0 | 0 | 12           | 12        |
|              |                        |             |  |   |   | <b>Total</b> | <b>18</b> |

# Experiential Learning

## **Venture Creation Lab:**

Design, develop, and launch your startup with continuous mentorship and structured guidance from industry experts.

## **Innovation Challenges:**

Solve real-world business problems through live industry projects and dynamic case competitions.

## **Incubator Engagement:**

Collaborate with top incubators and accelerators to refine business ideas and access funding opportunities.

## **Business Simulations:**

Experience the complexities of decision-making through interactive simulations and scenario planning.

## **Immersive Internships:**

Work closely with startups and innovative enterprises, gaining first-hand insights into entrepreneurial ecosystems.

## **Global Perspectives:**

Engage in cross-cultural projects and explore global entrepreneurship through international collaborations.

## **Dynamic Networking Platforms:**

Interact with investors, industry leaders, and successful entrepreneurs through hackathons, summits, and networking events.

## **Tailored Pathways:**

Customise your learning experience by focusing on sector-specific innovation or emerging market trends.



Founders and leaders of new startups and business ventures as entrepreneurs.



Innovation and incubation managers are responsible for driving innovation within established organizations.



Corporate strategists and leaders within corporations focused on strategic growth and innovation.

## **CAREER OUTCOMES**

Graduates of the MBA – IEV are well-prepared to pursue a variety of career paths, including:



Venture capitalists specializing in funding and supporting early-stage startups.



Consultants, mentors, and advisors to startups and enterprises on innovation strategies and business development.



# KIIT Technology Business Incubator

KIIT-Technology Business Incubator (KIIT-TBI) is a non-profit incubator set up in 2009 as a Sec (8) company at KIIT Deemed to be University, Odisha. It is generously supported by various Government bodies such as MeitY, DST, BIRAC, MSME, TDB, DFID, UK, Startup Odisha, and other industries to boost the entrepreneurial ecosystem in the country. It has nurtured over 423 startups, including more than 132 commercialised products, over 10000+ technical jobs, and 150+ IPs, and raised INR 13 billion of external investment funding for the startups in Electronics, AR/VR, Biotechnology, digital health, Medtech, Defence and Aerospace, etc.

In 2020, the TBI was recognised as the Centre of Excellence in incubation by the Department of Science and Technology (DST), Government of India. KIIT Technology Business Incubator won the National Award for Technology Business Incubation for the year 2017 from the Union Minister for Science and Technology, Earth Sciences and has been awarded with National IPR Award 2021 under the category of Best Incubator for nurturing the IP instituted by the Office of the Controller General of patents, design and trademarks (CGPDTM), DPIIT, Govt of India. KIIT TBI has received the best incubator both in the public and private sectors by a survey conducted by BioSpectrum. KIIT-Technology Business Incubator (KIIT-TBI), the innovation hub of KIIT, has been honoured with the prestigious 'Incubator of the Year 2023 Award by the Asian Association of Business Incubation (AABI) in Bangkok, Thailand. KIIT-TBI is a strong promoter of manufacturing start-ups and aims to establish a manufacturing Hub in the state of Odisha.

With a built-up space of approximately 130,000 sq. ft, KIIT-TBI has a lot to offer in terms of infrastructure, from office space, seating facilities, and equipment to testing and prototyping labs. It has a dedicated 40,000 sq. ft of premier laboratory space offering a range of lab facilities and services to prospective start-ups and innovators for building ideas from the ground up with a minimum capital requirement. KIIT-TBI has expanded its presence by establishing a BIRAC Regional Techno entrepreneurship Centre (BRTC) by BIRAC-DBT, Government of India, to promote startups in the East and North-East State of India.

Nearly 50 startups of KIIT-TBI have raised follow-on Investment funding of Rs 1,300+ crore and are scaling new heights. KIIT TBI has been recognized as the Innovations for Defence Excellence (iDEX- Incubator) by the Ministry of Defense iDEX-DIO, Government of India. Additionally, KIIT TBI is also the implementation partner of the Boeing University Innovation Leadership Development (BUILD) program of Boeing to encourage young entrepreneurial minds to develop ideas that can be converted into viable business offerings. In the last 15 years of its journey, KIIT-TBI has built a holistic ecosystem to nurture deep-tech and social startups from ideation to the growth stage, including nurturing 20+ rural manufacturing clusters in various East and North-East states of India. With the required technical infrastructure and strong mentoring support, KIIT TBI is marching ahead to build international collaboration to support cross-border





# Message from CEO- KIIT TBI

**Prof. (Dr.) Mrutyunjay Suar**

Director General (Research & Development)

At KIIT Technology Business Incubator, we have always believed in the power of ideas and the limitless potential of young entrepreneurs to shape the future. The MBA in Innovation, Entrepreneurship, and Venture Development (IEV) is a visionary program that aligns perfectly with our mission to nurture innovation, build entrepreneurial ecosystems, and support startups from ideation to scale. In today's dynamic world, we need leaders who are not just business managers but also creative problem-solvers and risk-takers. This program is designed to equip aspiring entrepreneurs with the tools, mentorship, and real-world exposure required to transform ideas into impactful ventures. Through our close collaboration with the School of Leadership, we offer access to a thriving network of mentors, incubator resources, funding opportunities, and a vibrant startup community. At KIIT-TBI, we are excited to walk alongside the students of the IEV program, supporting their journeys, fueling their ambitions, and celebrating their successes. Whether you are building your first startup or looking to scale a bold new idea, this is the place to begin.

Let's innovate. Let's lead. Let's build the future together.

# The Ecosystem

The KIIT TBI acts as a live lab where learners apply what they learn in class—strategy, marketing, finance—in real-world ventures. Learners have full access to the infrastructure and support services of the KIIT-TBI to leverage their innovation, sharpen their entrepreneurial mindset and indulge in venture creation from the moment they step into the program.



## Beyond generic mentorship, we provide a 360° venture-building ecosystem:

### 1. Incubation & Acceleration Support

- Structured Incubation Framework:
- Pre-Incubation: Idea validation, lean canvas modelling, MVP development
- Dedicated workspace, legal/IP support
- Incubation: Seed funding access (up to ₹25 lakhs via DST/Startup India),
- Scale-Up: Investor connects, CSR partnerships, export facilitation

### 2. Prototyping & Tech Infrastructure

#### Makerspace Access:

- 3D printers, CNC machines, IoT/Wearables lab
- UX/UI simulation labs for digital ventures
- Partnerships with Google, Autodesk for Licensed advanced tools
- AgriTech, healthcare diagnostics, renewable energy

### 3. Intellectual Property (IP) Support

- End-to-end IP filing assistance via empaneled legal firms
- Patent drafting, prior-art searches, PCT filings
- Up to 80% cost reimbursement under the Govt. schemes

### 4. Expert Mentorship Network

- Resident Entrepreneurs: Weekly 1 session with founders of 15+ operational startups
- Domain Experts: Tech: Ex-CTOs from recognised Startup companies
- Business: CXOs from Tata Steel, ITC, other industry experts
- Social Impact: Leaders from NABARD, UNDP, HDFC, CSR

### 5. Funding & Investment Support

- Government Schemes: Startup India Seed Fund (SISFS), MSME Innovative Schemes (CIPS, ASPIRE)
- External Funding: Angel Network: Mumbai Angels, Lead Angels. VC Partnerships: IPV, SeaFund, Unicorn Ventures
- Debt Financing: SIDBI, NABVENTURES
- Pitch Clinics: Monthly sessions with active investors

### 6. Global-Local Market Connect

- International Collaboration: MoUs with Startup Runway (USA), UK- India Health care (France)
- Student exchange programs with Tandem Germany, RWTH Aachen
- Local Industry Engagement: Live projects with VEDANTA, JSPL, Tata Steel, Odisha Mining Corp
- Tribal artisan clusters for sustainable ventures
- Smart City Bhubaneswar partnership for civic tech

### 7. Real-World Problem Solving

- Community-Centric Innovation: Rural immersion programs in Odisha/Jharkhand villages
- Industry problem statements from FICCI/CII East Chapters
- CSR Collaborations: TATA Steel, Hindustan Zinc for social ventures

### 8. Lifetime Support

- Alumni access to TBI resources for 3 years post-graduation
- Dedicated "Scale-Up Desk" for regulatory / government compliance
- Annual demo day with 10+ investor network

# The Application Process

## Eligibility

Undergraduate students from UGC - recognized institutions with 10+2+3 (or) 4 years of prior education.

**OR**

Those appearing for their final examination (subject to passing) are also eligible to apply.

## The Selection Process

To be selected, the student should have appeared for either CAT/ XAT/ MAT/ GMAT/ CMAT/ KIITEE/ KIITEE-Management.

Admission is based on the combined scores of

- (a) UG degree marks ;
- (b) Entrance test scores; and
- (c) Personal interaction.

## Admission Roadmap

**01**

### Step 1

Fill the MBA IEV application form

**02**

### Step 2

Upload required documents, photographs, marksheets & signature

**03**

### Step 3

Participate in personal interaction round

**04**

### Step 4

If selected, complete the admission formalities

## Program Fees

|                                  | Admission Fee | Semester 1 | Semester 2 | Semester 3 | Semester4 |
|----------------------------------|---------------|------------|------------|------------|-----------|
| One time admission fee           | 75,000        |            |            |            |           |
| Tuition fee                      |               | 1,61,250   | 1,61,250   | 1,61,250   | 1,61,250  |
| Development fee                  |               | 60,000     | 60,000     | 60,000     | 60,000    |
| Co & Extra-curricular activities |               | 20,000     | 20,000     | 20,000     | 20,000    |
| Total                            | 75,000        | 2,41,250   | 2,41,250   | 2,41,250   | 2,41,250  |

Exclusive of hostel and food charges.





# Message from Dean - KSLd

**Dr Pinaki Nandan Pattnaik**

Welcome to the MBA in Innovation, Entrepreneurship, and Venture Development at KIIT Deemed to be University, Bhubaneswar!

In an era marked by rapid technological advancements and global disruptions, the ability to innovate and lead entrepreneurial ventures is no longer a choice — it is a necessity. At KIIT, we recognise the immense potential that lies in shaping tomorrow's leaders who can create, disrupt, and transform industries and are committed to developing not just business leaders, but innovators and changemakers who can lead with purpose and drive social and economic impact. The MBA-IEV program is not just about understanding business principles; it is about cultivating a mindset that thrives on innovation, resilience, and entrepreneurial thinking. It is meticulously designed to equip innovators and future entrepreneurs with knowledge, skills, and strategies to navigate the complexities of building and scaling successful ventures. From ideation to execution, with mentorship from industry leaders, practical learning opportunities, and cutting-edge research resources, learners will be empowered to transform their entrepreneurial vision into reality.

As a part of KIIT, you will have access to a nurturing ecosystem that fosters creativity, critical thinking, and collaboration. With mentorship from industry leaders, practical learning opportunities, and cutting-edge research resources, you will be empowered to transform your entrepreneurial vision into reality. Our world-class faculty, coupled with our state-of-the-art infrastructure, will guide you in honing the skills that are vital for success in today's dynamic business world.

At KIIT, we are committed to developing not just business leaders, but innovators and changemakers who can lead with purpose and drive social and economic impact. Whether you are looking to launch your own startup, contribute to existing organisations, or innovate within any sector, this program provides the perfect foundation for your aspirations.

We invite you to join us on this exciting journey and become part of a legacy that values creativity, entrepreneurship, and the relentless pursuit of excellence.

# Board of Studies



**Mr. Jay Krishnan**  
Partner  
Beyond Next Ventures,  
Founder CEO – T-Hub



**Mr. Indranil Das**  
Founder, Leaderion  
and Former VP –  
Ericsson



**Mr. Pramod  
Chandrasekhar**  
Head, KE – Brane, VP  
– HSBC



**Prof. Mrutyunjay  
Suar**  
CEO, KIIT TBI



**Prof. (Dr.) Faizan Mustafa**  
Vice – Chancellor,  
Chanakya National Law  
University



**Ms. Namrata  
Mishra**  
CEO, BCKIC



**Prof. (Dr.) Pratik Modi**  
Dean, School of  
Agribusiness, Tribhuvan  
Sahkari University



**Mr. Gautam Kumar**  
Founder, Fareye



**Dr. Sweta Leena  
Hota**



**Prof. (Dr.) Nirmalya Bagchi**  
Director, Centre for Management  
Studies, ASCI



**Dr. Pinaki Nandan  
Pattnaik**



**Dr. Saswat  
Kishore Mishra**



**Prof. Suvasis  
Ghosh**



**Dr. Kumar  
Mohanty**





**Dr. Sweta Leena Hota**

Program co-ordinator,  
MBA IEV



**Mr. Vishal JC**

Co-ordinator,  
TBI Ecosystem

## Faculty Mentors



**Prof. Debasish Mohapatra**  
Agri-innovation Management



**Dr. Namrata Mishra**  
Venture Creation &  
Development



**Dr. Saswat Kishore Mishra**  
Innovation Economics



**Prof. Kumar Mohanty**  
Strategic Management



**Dr. Ananya Das**  
Social Entrepreneurship



**Dr. Sameer Shekhar**  
International Business



**Dr. Bignya Patnaik**  
Women Entrepreneurship



**Dr. Sudipta De Sarkar**  
Innovation & Start-up Policy



**Prof. Suvasis Ghosh**  
New Venture Strategy



**Dr. Queen Sarkar**  
Communications



**Dr. Sikta Singh**  
Entrepreneurial Finance



**Dr. Sanjaya Kumar Lenka**  
Market Analytics



# Professors of Practice



**Name: Jay Krishnan**

Company: Beyond  
Next Ventures India  
Designation: Partner



**Name: Srinivas  
Kollipara**

Company: Biome  
Designation: Managing  
Partner



**Name: Bodhisattwa  
Sanghapriya**

Company: IG Drones  
Designation: Founder  
& CEO



**Name: Partha Das**

Company: Tata  
Consulting  
Engineers Limited  
Designation: Cost  
Engineer



**Name: Lt Col Monish Ahuja**

Company: Confederation of  
Biomass Energy Industry of  
India  
Designation: Chairman



**Name: Samidha  
Mahapatra**

Company: Ericsson  
Designation: Industry  
Analyst Relations



**Name: Bibhu Bahalia**

Company: ASSAVA  
Designation: Co-  
Founder



**Name: CA Praveen  
Munukutla**

Company: Bossjobs.in  
Designation: Co-founder



**Name: Pramod  
Chandrasekhar**

Company: Brane  
Enterprises Pvt Ltd  
Designation: Corporate  
Leadership Coach



**Name: Praveen Pantula**

Company: MediaMint  
Designation: Vice  
President, Human  
Resources



**Name: Babu Vittal**

Company: RTP Global  
Designation: HR & People  
practice



**Name: Tanmaya Das**

Company: RateGain  
Designation: Chief  
Financial Officer



**Name: Tejaswy Rama**

Company: KPMG India  
Designation: Director  
– Clients & Markets



**Name: Rajashree Sahoo**

Company: ACHIVIA  
Designation: Education &  
Career Consultant



**Name: Aditya Prakash  
Rao**

Company: PLR Chambers  
Designation: Partner



**Name: Indranil Das**

Company: Leaderion  
Designation: Founder



**Name: Ajay Jain**

Company: Silverneedle Ventures  
Designation: Founder & Managing Partner



**Name: Piyush Patnaik**

Company: D and P Advisory  
Designation: Partner



**Name: Gautam Kumar**

Company: FarEye  
Designation: Co-Founder



**Name: Nivedita Satpathy**

Company: Meri Sakhi The Counselling Desk



**Name: Salil Panda**

Company: HighRadius  
Designation: Senior Director



**Name: Rakesh Prasad**

Company: Indigo  
Designation: AVP-HR



**Name: Subir Mahapatra**

Company: FBSL  
Designation: Senior VP



**Name: Nibedita Panda**

Company: EWBC  
Designation: Head of Segments



**Name: Manbhanjan Panda**

Company: MAYA  
Designation: Group



**Name: Gopal Sharma**

Company: NASSCOM  
Designation: CFO





# Corporate Partners



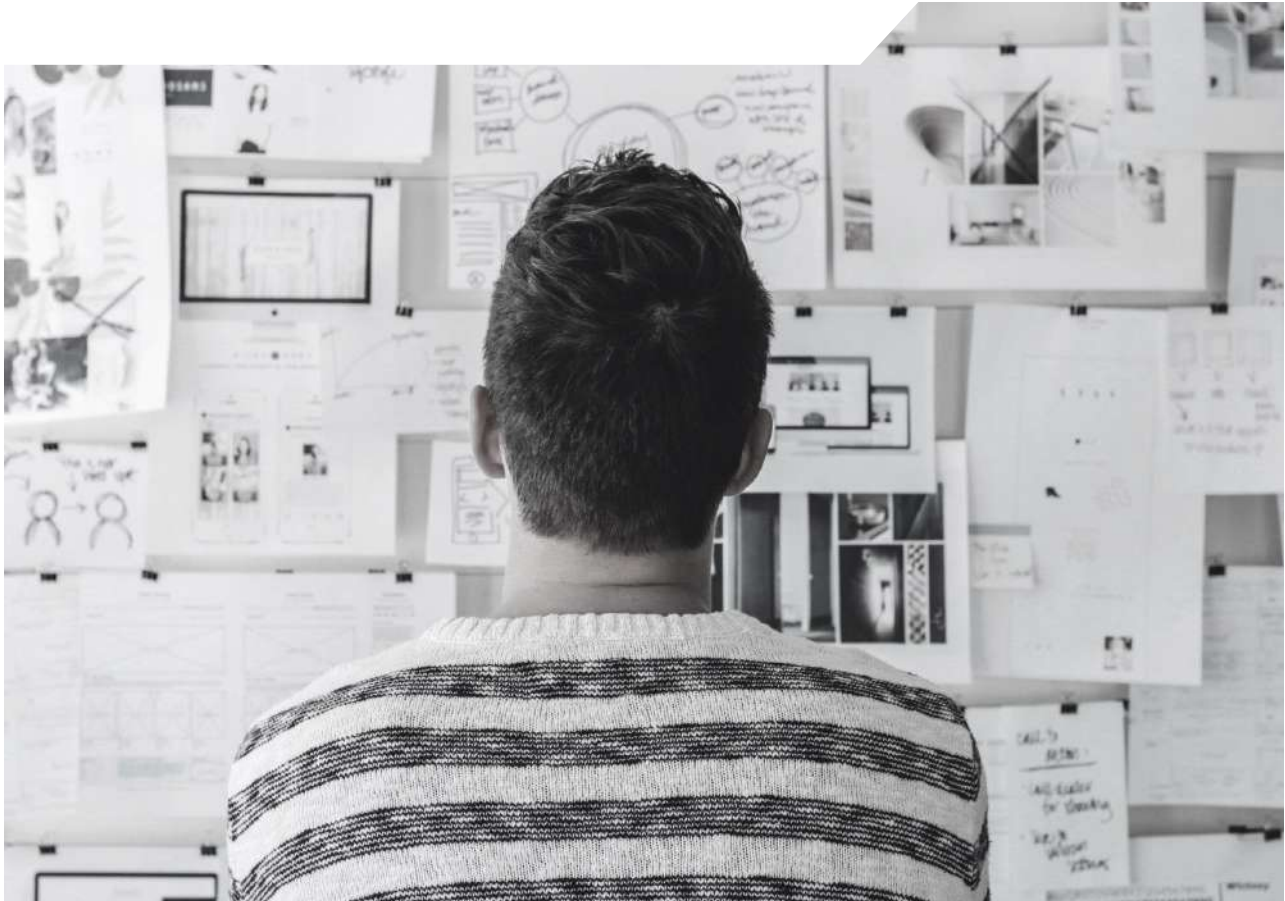




**KALINGA INSTITUTE OF INDUSTRIAL TECHNOLOGY**

Deemed to be University U/S 3 of the UGC Act, 1956

**SCHOOL OF LEADERSHIP**



# Reach us at

**MBA IEV Program Office**

**(+91) 9338120390**

**[info.sld@kiit.ac.in](mailto:info.sld@kiit.ac.in)**

**[sld.kiit.ac.in](http://sld.kiit.ac.in)**

**[LinkedIn](#)   [Instagram](#)   [Facebook](#)**



School of Leadership, KIIT Deemed to be University, Bhubaneswar, Odisha, 751024